

# Environment building

Revision	Date	Description
V1.0	2016/7/15	ENVIRONMENT BUILDING

**Archermind**

**2016/7/20**

# Contents

1. Introduction.....	1
2. Prepare.....	2
2.1. Environment building.....	2
2.1.1. Ubuntu installation.....	2
2.1.2. Ubuntu tools installation.....	6

# 1. Introduction

This introduction can help user to build the environment.

## 2. Prepare

### 2.1. Environment building

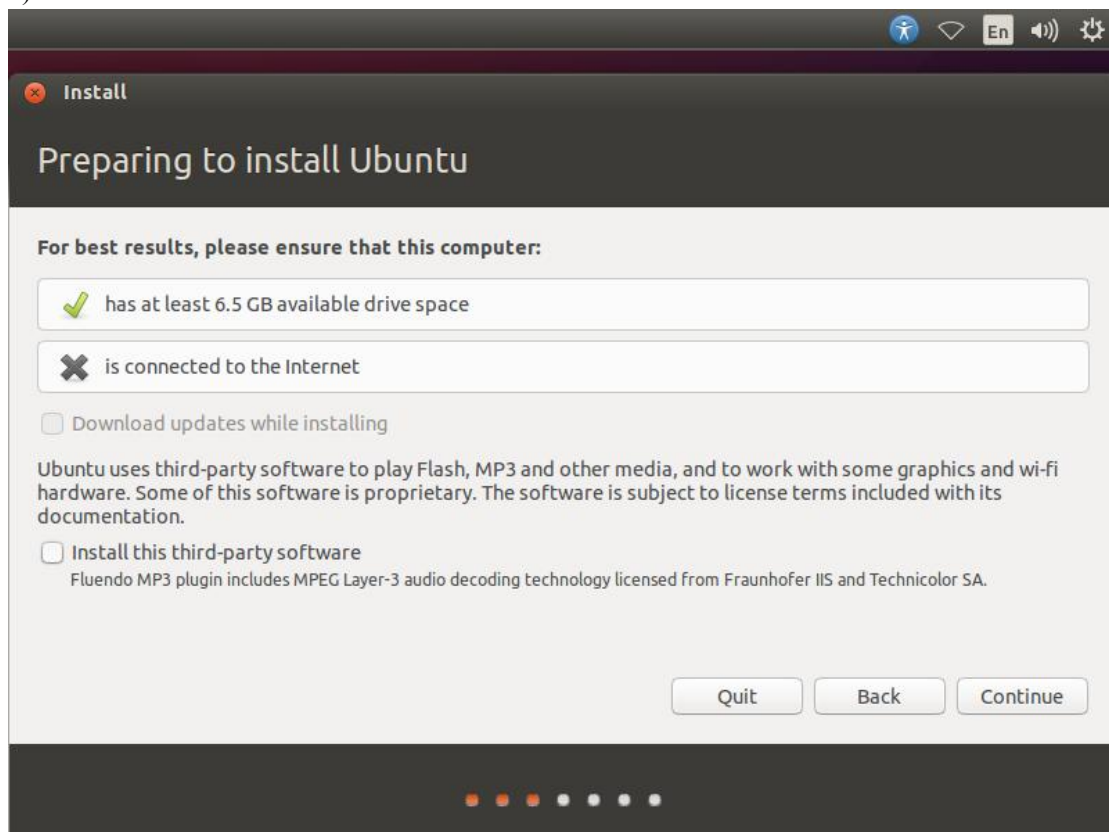
#### 2.1.1. Ubuntu installation

Recommend OS: Ubuntu 14.04(LTS) 64bit

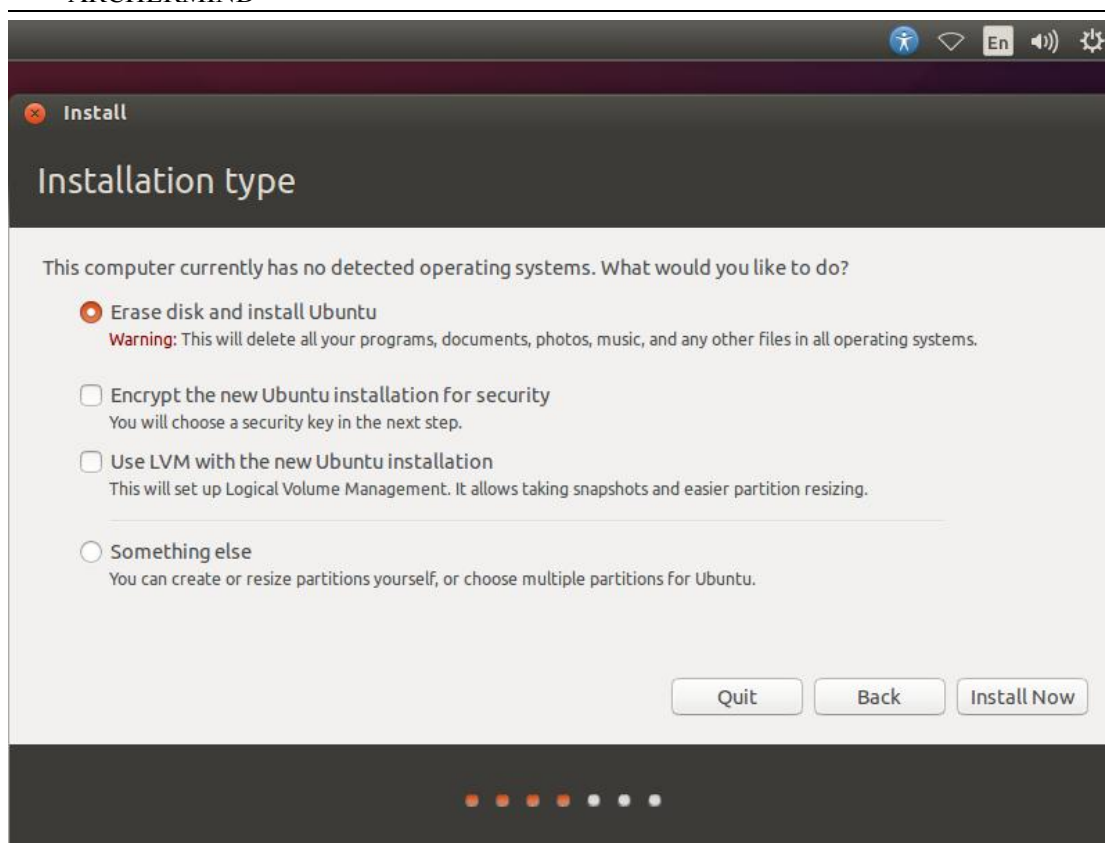
Download address: <http://releases.ubuntu.com/14.04/>

Installation steps:

1) Start to install:

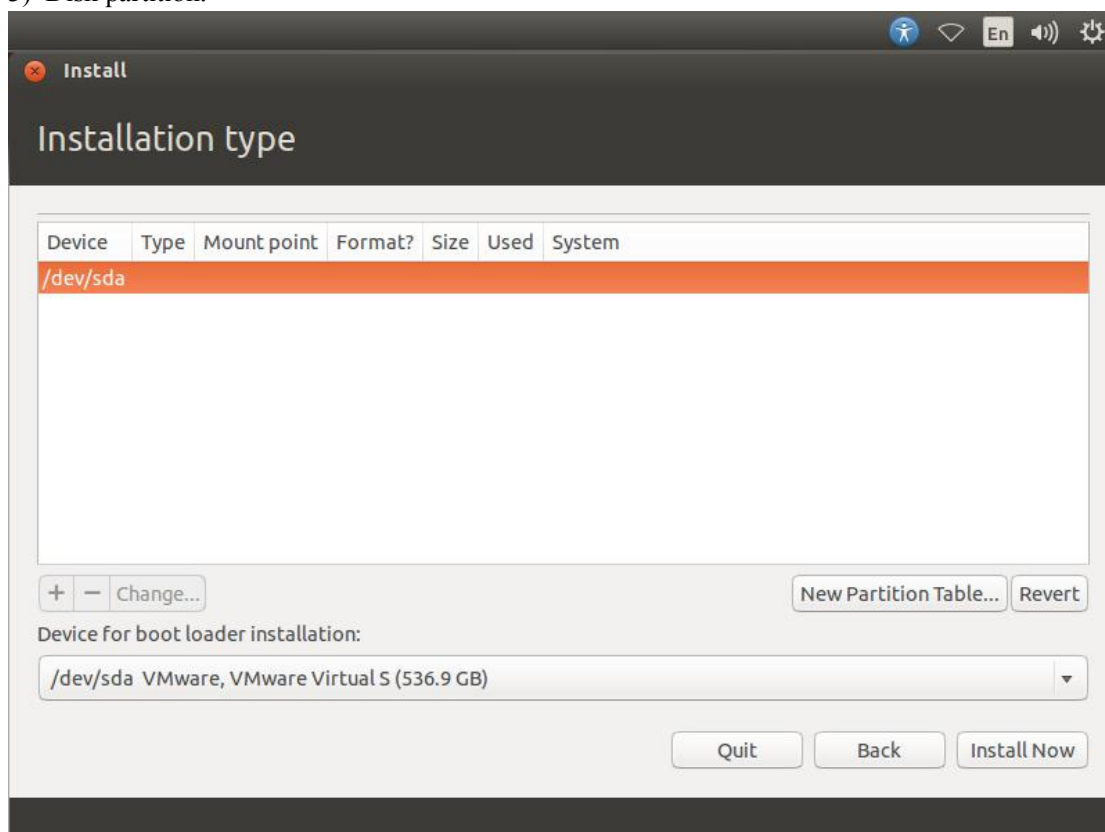


2) Choose installation type:



You should choose your installation type base-on your server or machine. You could choose "Something else" if you want to customize the partitions.

3) Disk partition:

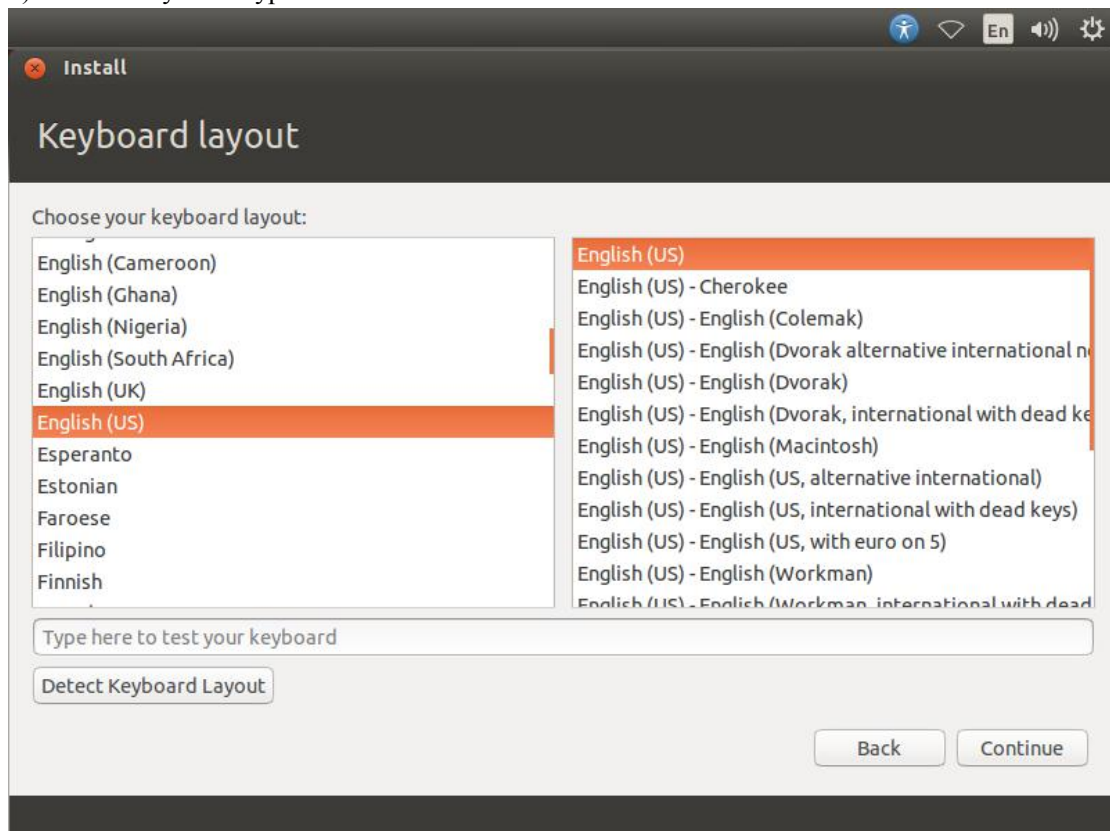


If you choose "Something else" on above step, you should customize the partitions by yourself.

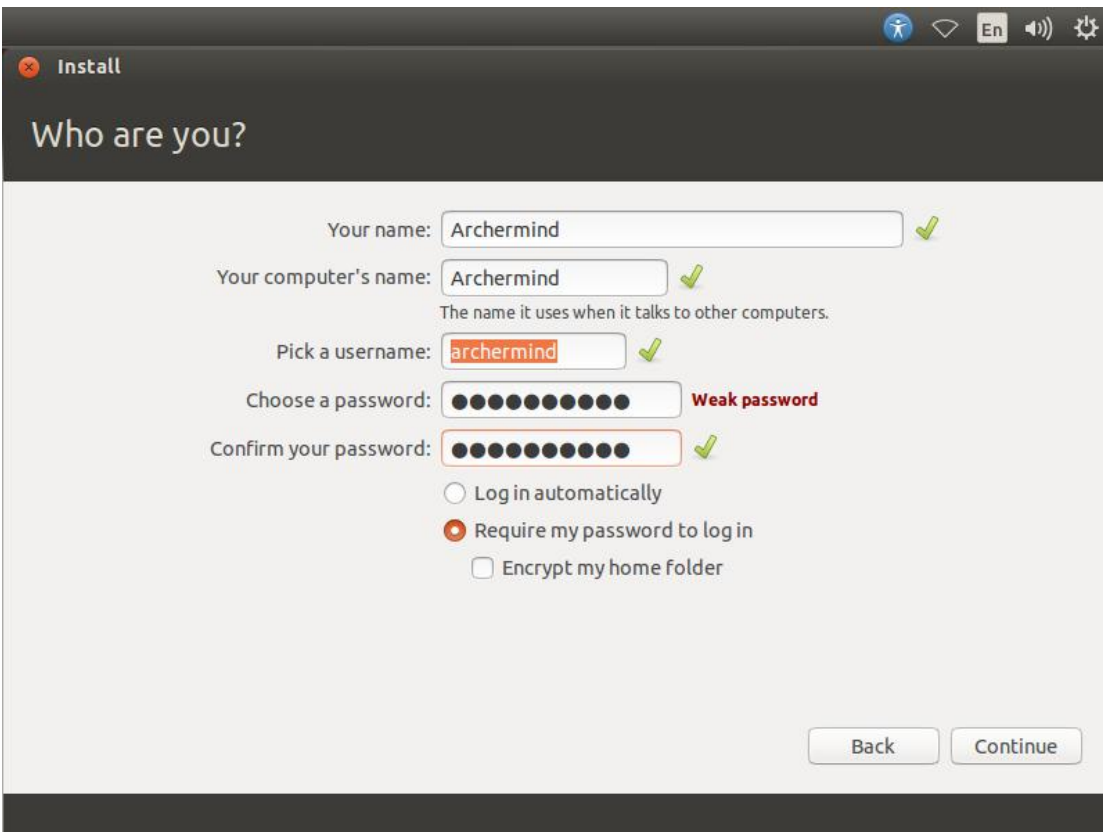
4) Choose timezone:



5) Choose keyboard type:



6) Fill in information:



Who are you?

Your name:  ✓

Your computer's name:  ✓  
The name it uses when it talks to other computers.

Pick a username:  ✓

Choose a password:  Weak password

Confirm your password:  ✓

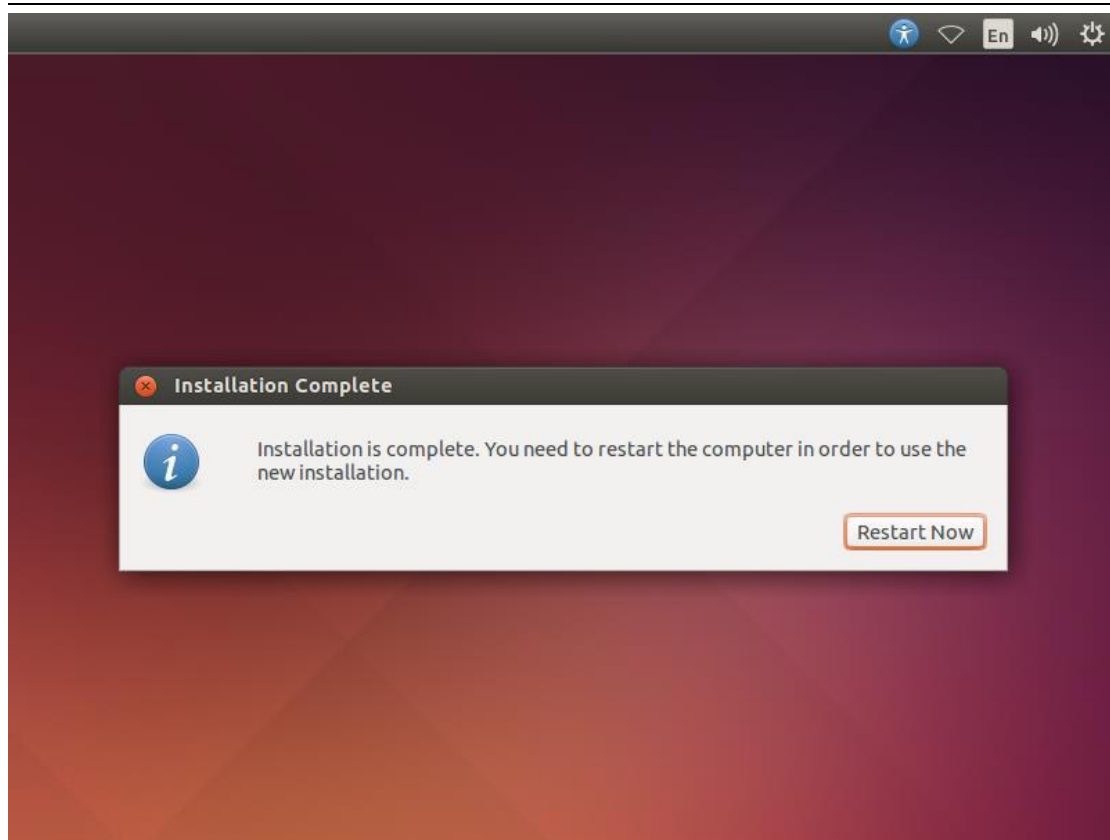
☐ Log in automatically  
☒ Require my password to log in  
☐ Encrypt my home folder

Back Continue

7) Installing...:



8) Installation complete:



When the installation is complete, please reboot your machine.

### 2.1.2. Ubuntu tools installation

Open a terminal, and execute the following command:

```
$ sudo apt-get install git-core gnupg flex bison gperf libssl1.2-dev \
libbsd0-dev libwxgtk2.8-dev squashfs-tools build-essential zip curl \
libncurses5-dev zlib1g-dev pngcrush schedtool libxml2 libxml2-utils \
xsltproc lzop libc6-dev schedtool g++-multilib lib32z1-dev lib32ncurses5-dev \
lib32readline-gplv2-dev gcc-multilib libswitch-perl
```